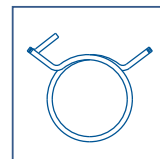
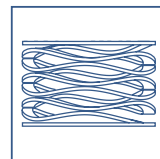
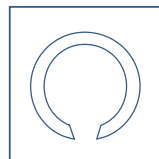
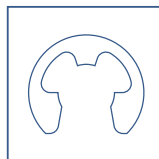
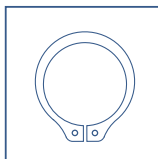
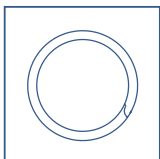


PRODUCT OVERVIEW

[ROTORCLIP.COM](https://rotorclip.com)

TAPERED SECTION RETAINING RINGS / CIRCLIPS | CONSTANT SECTION RETAINING RINGS
SPIRAL RETAINING RINGS | WAVE SPRINGS | SELF-COMPENSATING HOSE CLAMPS



APPLICATION DRIVEN SOLUTIONS™



Rotor Clip products deliver quality and strength, backed by traceability, expertise and customer trust.

YOUR APPLICATION, YOUR SOLUTION, WE MAKE THEM ALL

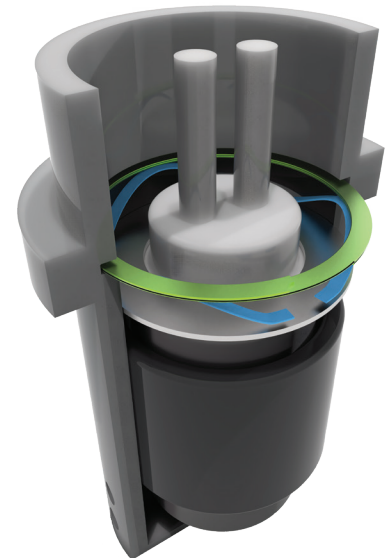
Rotor Clip is the global leader in the manufacture of Retaining Rings, Wave Springs and Hose Clamps. With over 20,000 standard parts, we specialize in engineering the right part for the right application, every time, whether it is a standard or custom.

20,000 STANDARDS, ENDLESS CUSTOM CAPABILITIES

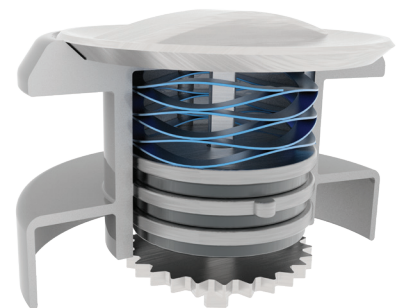
If our stock items are not the right fit, we are able to support your application requirements with a custom solution. We have designed and manufactured thousands of custom solutions across nearly every industry.

Our team of design, metallurgical and manufacturing engineers are available to consult with customers to solve difficult problems and ensure they receive the highest-quality, highest-performing products.

Throughout the years, Rotor Clip has received numerous quality awards from major OEMs, automotive manufacturers and distributors.



Exhaust sensor with flat end wave spring and spiral ring



Spinner reel with multi-turn wave spring

OUR PRODUCT OFFERINGS

- Tapered Section Rings
- Constant Section Rings
- Spiral Rings
- Wave Springs
- Hose Clamps
- Installation Tools



Linear worm actuator with internal retaining ring

OUR CERTIFICATIONS

AS 9100	IATF 16949	ISO 9001	ISO 14001	ISO 13485	TISAX
------------	---------------	-------------	--------------	--------------	-------

Learn about our extensive capabilities. Watch now.



TAPERED SECTION RETAINING RINGS

- Axially Assembled - Internal/External
- Radially Assembled - External
- Self-Locking - External
- Inch - DIN - ANSI Metric - JIS
- Standards: .040" to 15" / 1mm to 1000mm
- Can accommodate higher thrust loadings
- Installation tools available
- Various materials and finishes available



CONSTANT SECTION / SNAP RINGS

- Axially Installed - Internal/External
- Inch - DIN - Metric
- Uniform material width - 3 point contact with groove when installed
- Offers more clearance than a tapered section ring
- Standards: .157" to 10" / 4mm to 450mm
- Highly customizable
- Various materials and finishes available



SPIRAL RINGS

- Axially Installed - Internal/External
- Inch - DIN - Metric
- 360 degree contact with groove
- More clearance than tapered section rings
- Low thrust load applications
- Standards: .250" to 10" / 6mm to 400mm
- Highly customizable
- Various materials and finishes available including special alloys



WAVE SPRINGS

- Up to 50% space savings compared to coil springs
- Inch - Metric
- Single-Turn and Multi-Turn designs
- Improve bearing and application life
- Available in plain ends, shim ends, and patented flat ends
- Various materials and finishes available including special alloys
- Custom configurations, sizes and materials



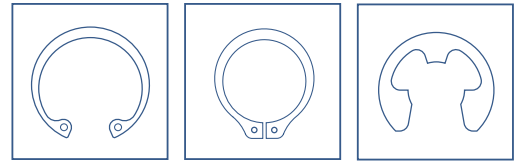
HOSE CLAMPS

- Single Wire - Double Wire
- Constant Tension Band
- Self-compensating - No screws required
- Cannot be over/under tightened
- Expand and contract with temperature shifts
- Uniform hose pressure
- Installation ease



REQUEST
SAMPLES

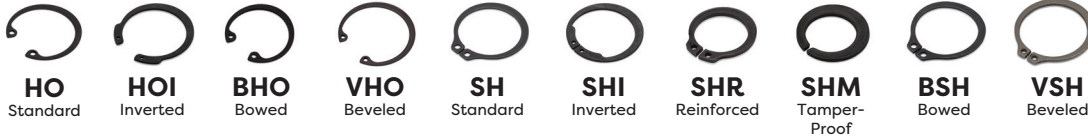
PRODUCT INDEX



Axially Assembled, Inch Tapered Section Retaining Rings

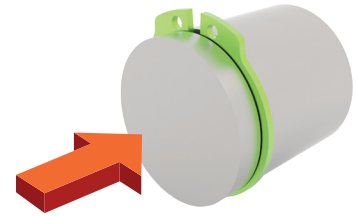
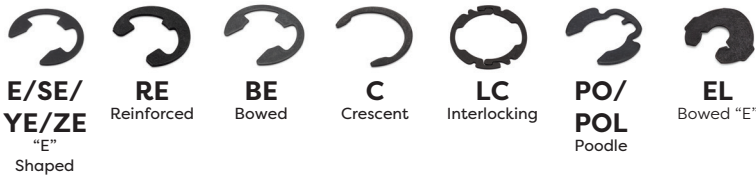
Internal

External



Radially Assembled, Inch Tapered Section Retaining Rings

External

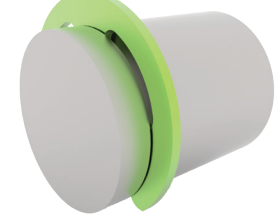
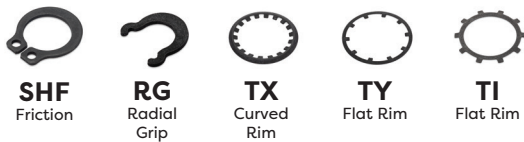


Axially Assembled

Self-Locking, Inch Tapered Section Retaining Rings

External

Internal

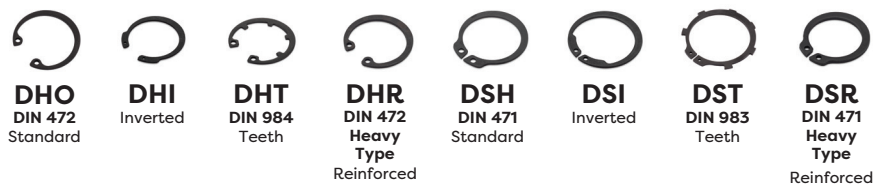


Radially Assembled

Axially Assembled, Metric Tapered Section Retaining Rings

Internal

External



Radially Assembled, Metric Tapered Section Retaining Rings

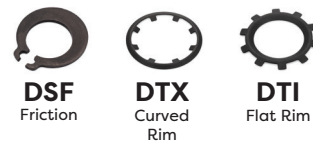
External



Self-Locking, Metric Tapered Section Retaining Rings

External

Internal



JIS "E" Retaining Rings

External



Axially Assembled, ANSI Metric Tapered Section Retaining Rings

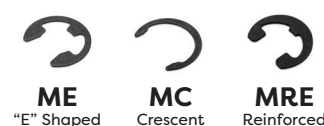
Internal

External

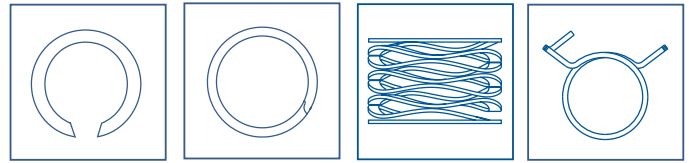


Radially Assembled, ANSI Metric Tapered Section Retaining Rings

External



PRODUCT INDEX



Inch Constant Section Retaining Rings

Internal

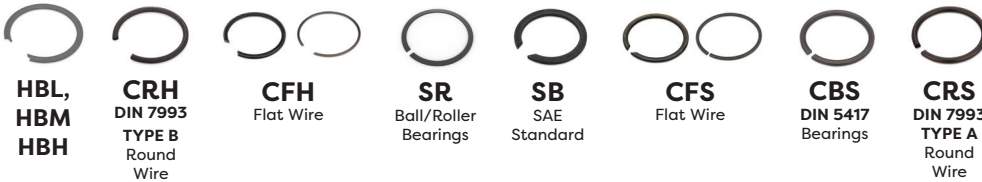
External



Metric Constant Section Retaining Rings

Internal

External



Shims

Internal/External



Inch Spiral Retaining Rings

Internal

External



Spiral Wave Rings

Internal External



Metric Spiral Retaining Rings

Internal

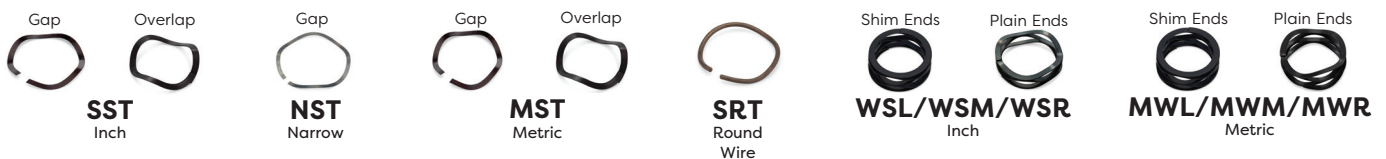
External



Wave Springs

Single-Turn

Multi-Turn

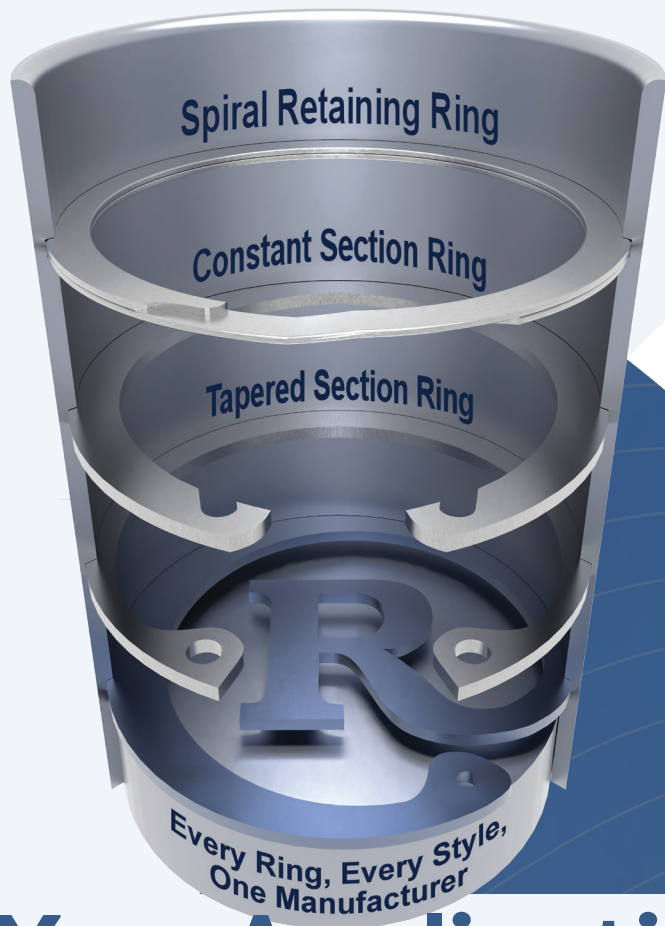


Self-Compensating Hose Clamps

Wire Clamps

Band Clamps





Coiled or Stamped, Engineered for You

- ® Every ring, every style,
one manufacturer
- ® Standard & custom
capabilities
- ® Diameters as small as .040"
- ® Stainless steel &
exotic alloys
readily available

Your Application, Your Solution, We Make Them All

® Reduce operating
heights by 50%

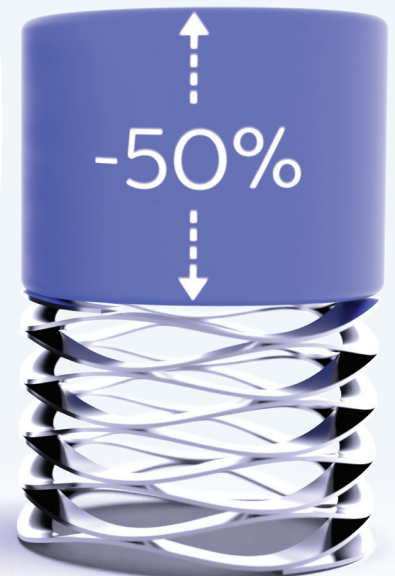
® Standard &
custom capabilities

® Diameters as
small as .118"

® Stainless steel &
exotic alloys
readily available



Traditional Coil Spring



Rotor Clip
Multi-Turn Wave Spring